



Robin Hood Gardens

A + P Smithson

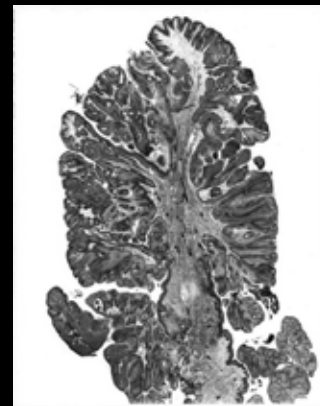
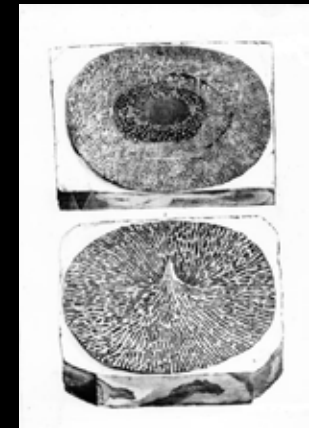
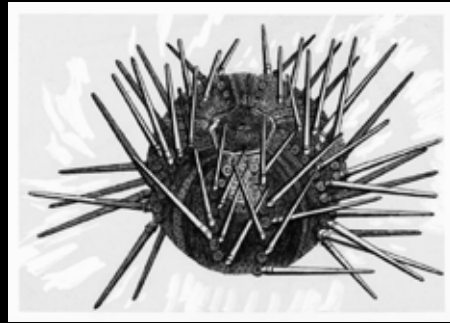
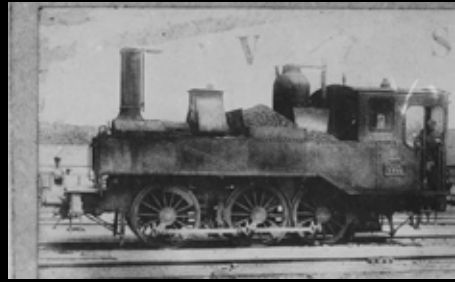
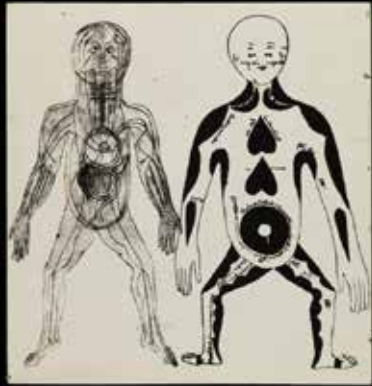
1 9 6 9 - 1 9 7 2

Giulia Ricci - 2 Maggio 2016

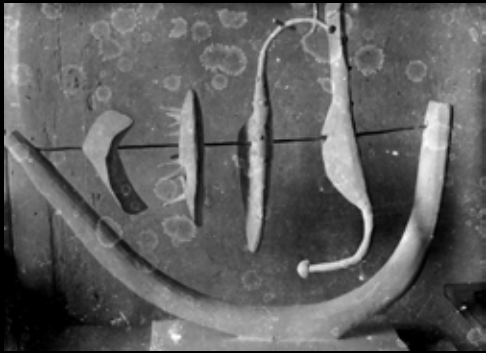




Da sinistra, Robert Smithson, Eduardo Paolozzi, Alison Smithson, Nigel Henderson
dall'archivio Nigel Henderson



Immagini da *Parallel of Life and Art*, archivio Nigel Henderson



EDUARDO PAOLOZZI
&
NIGEL HENDERSON



Immagini dall'archivio Nigel Henderson

As found

Ordinariness

Warehouse Aesthetics

Brickness

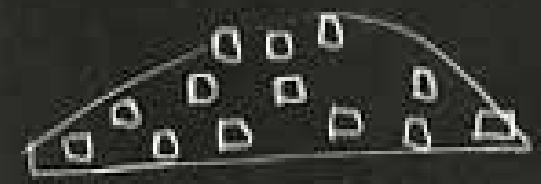
Reyner Banham e Jonathan Sergison

COUNTRY



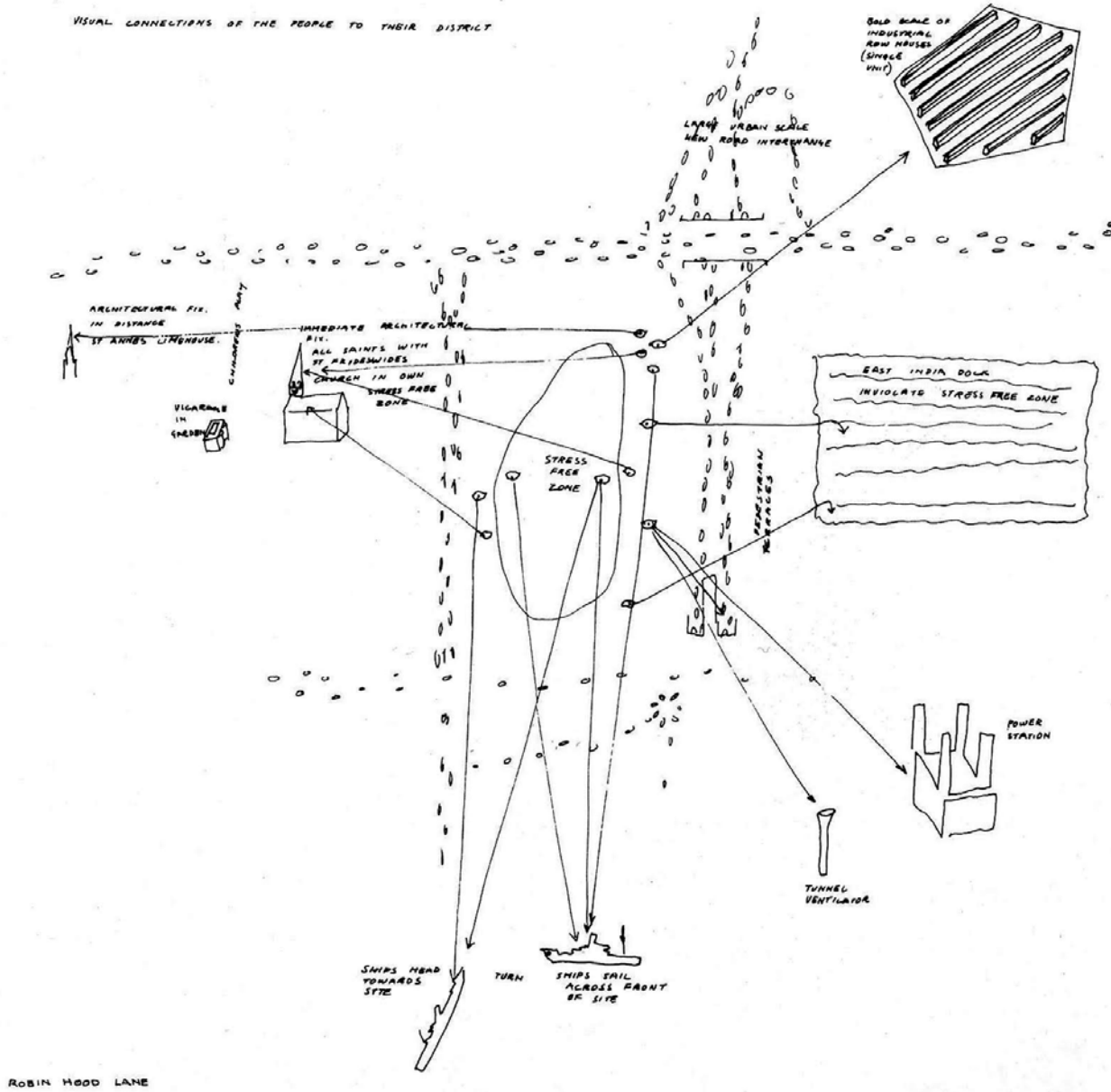
HABITAT IN LANDSCAPE

CITY

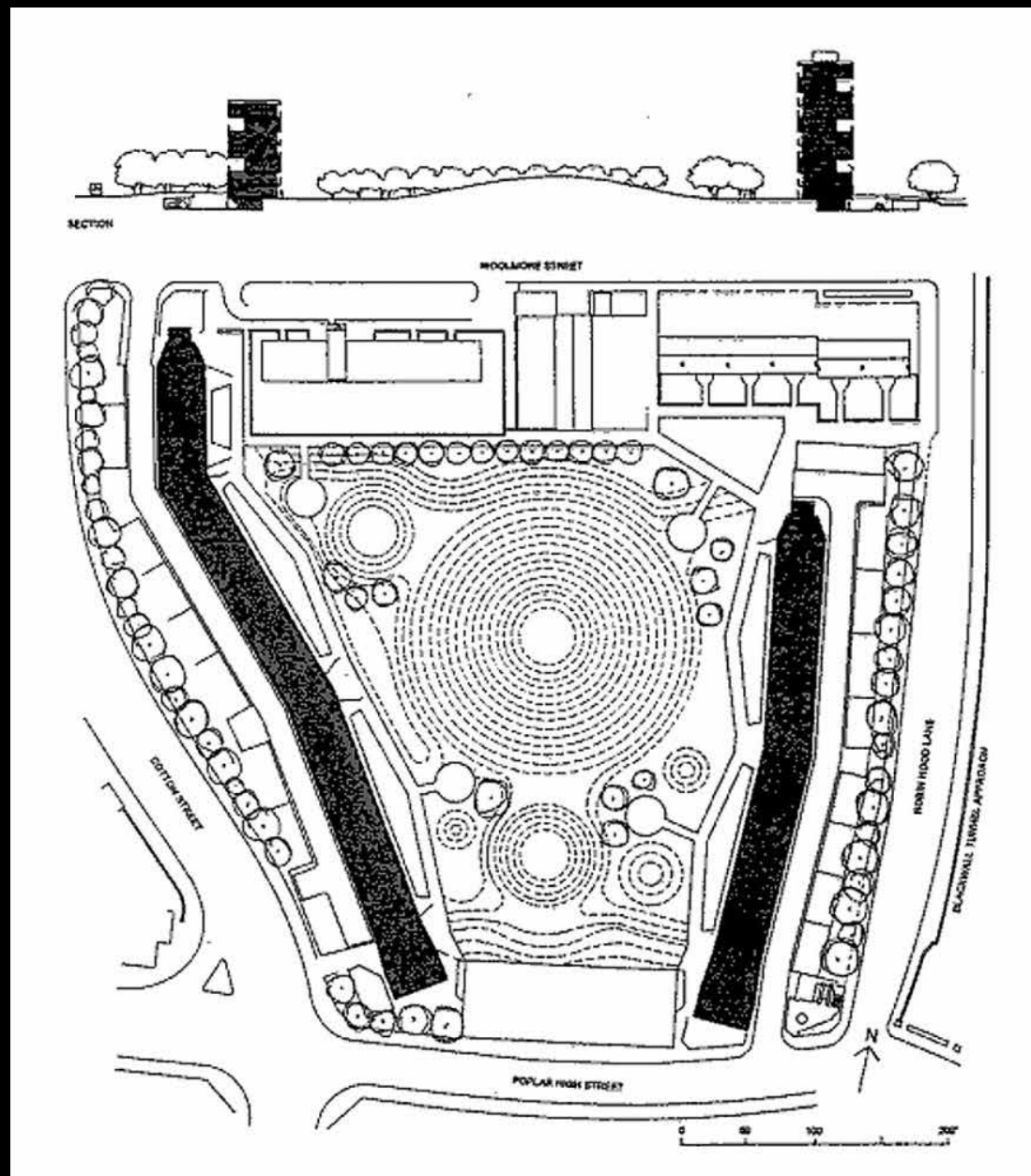


HABITAT IS LANDSCAPE

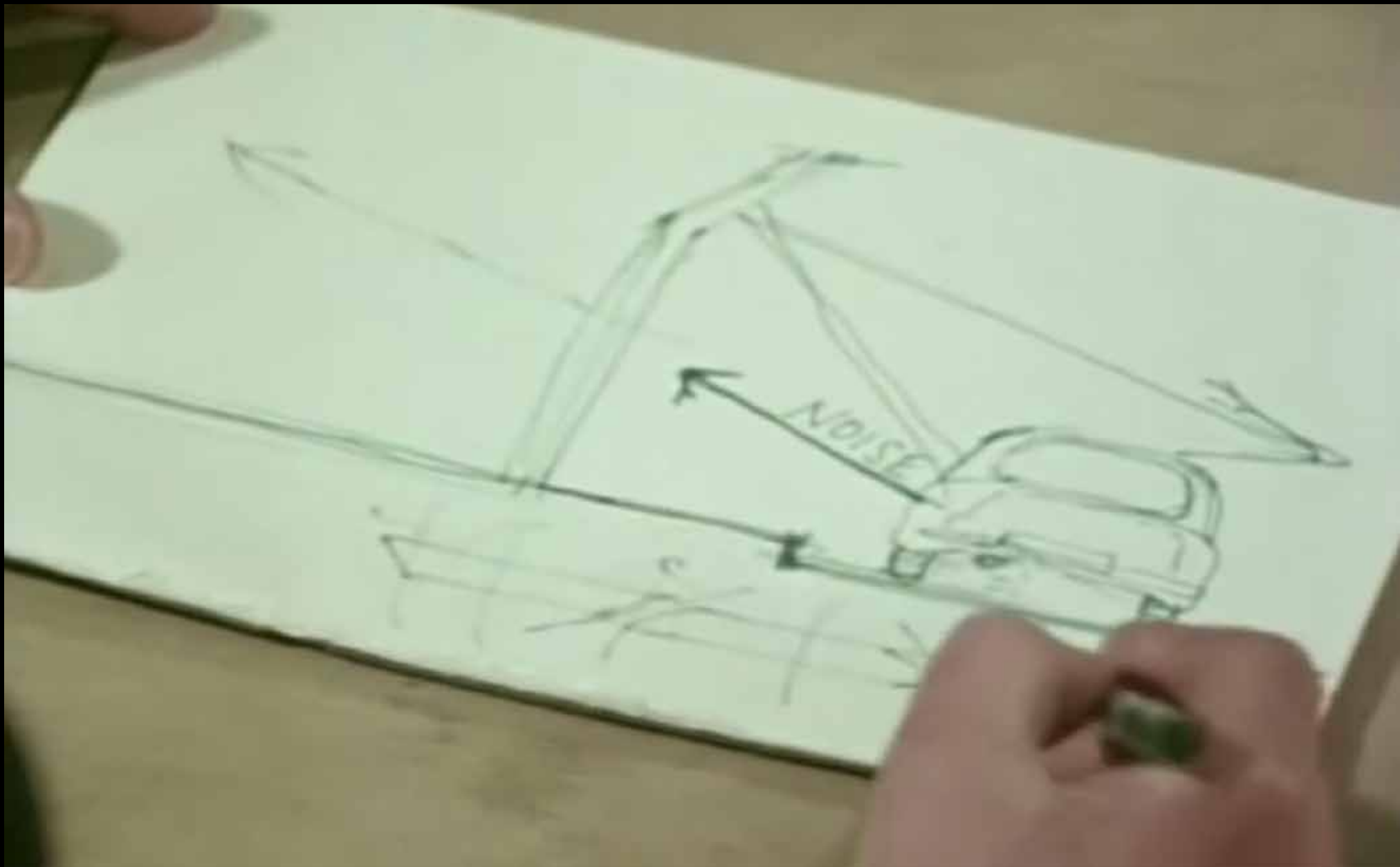
VISUAL CONNECTIONS OF THE PEOPLE TO THEIR DISTRICT



Studio per i Robin Hood Gardens

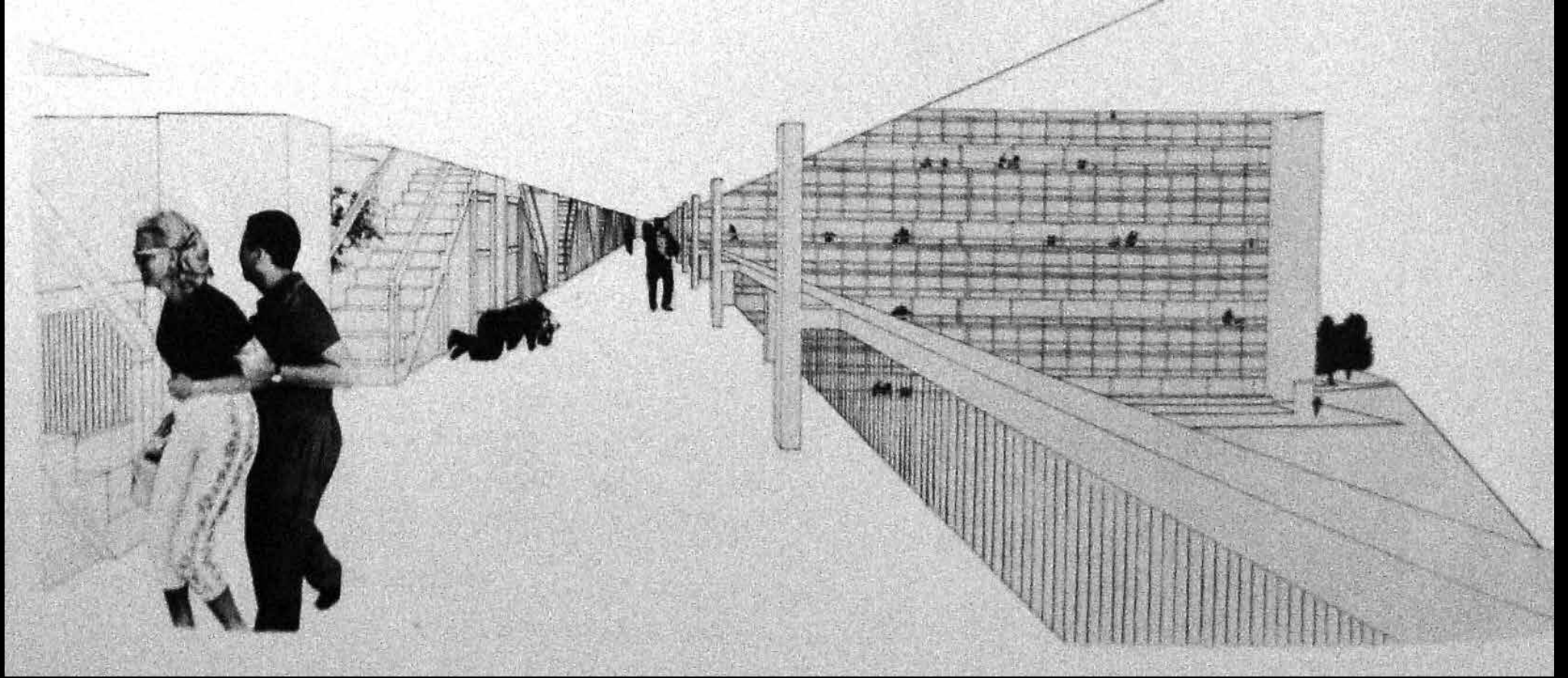


Planimetria generale e sezione

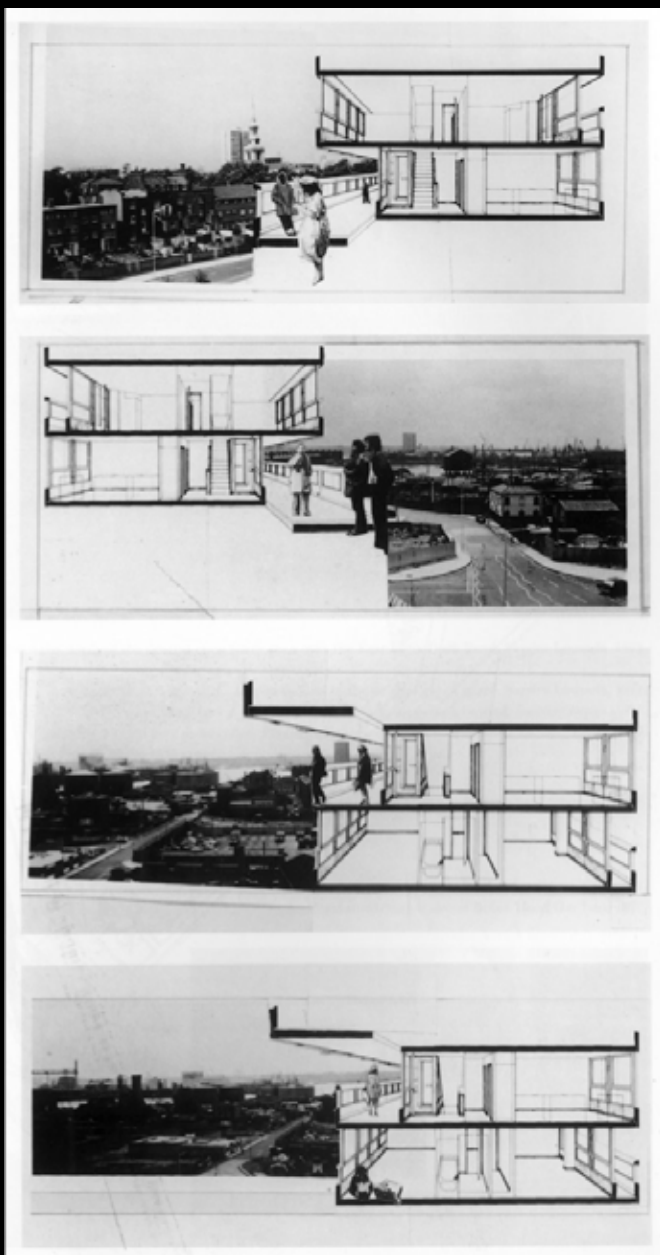


The Smithsons on Housing





Streets in the air, progetto per il concorso Golden Lane



Sezioni del corpo di fabbrica



Robin Hood Gardens, Sandra Lousada, 1972 © The Smithson Family Collection



Stress free zone



Stress free zone



Stress free zone



Minoru Yamasaki, Pruitt-Igoe (1954 -1955) Saint Louis, Missouri



3 p.m, 16th March, 1972